

State of NY Rural Schools: Trends, Dollars & Performance

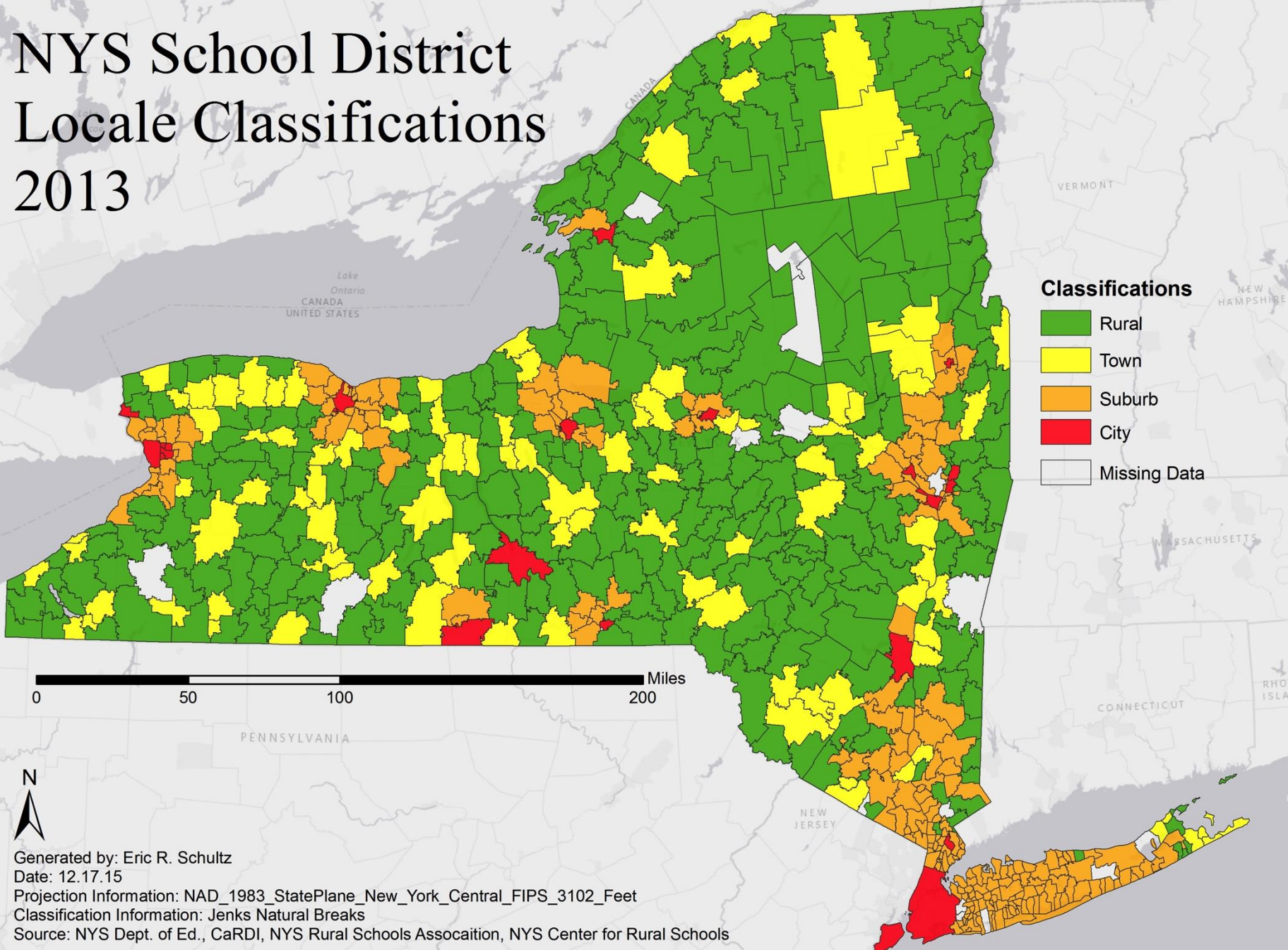
Prof. John W. Sipple, PhD

Cornell University

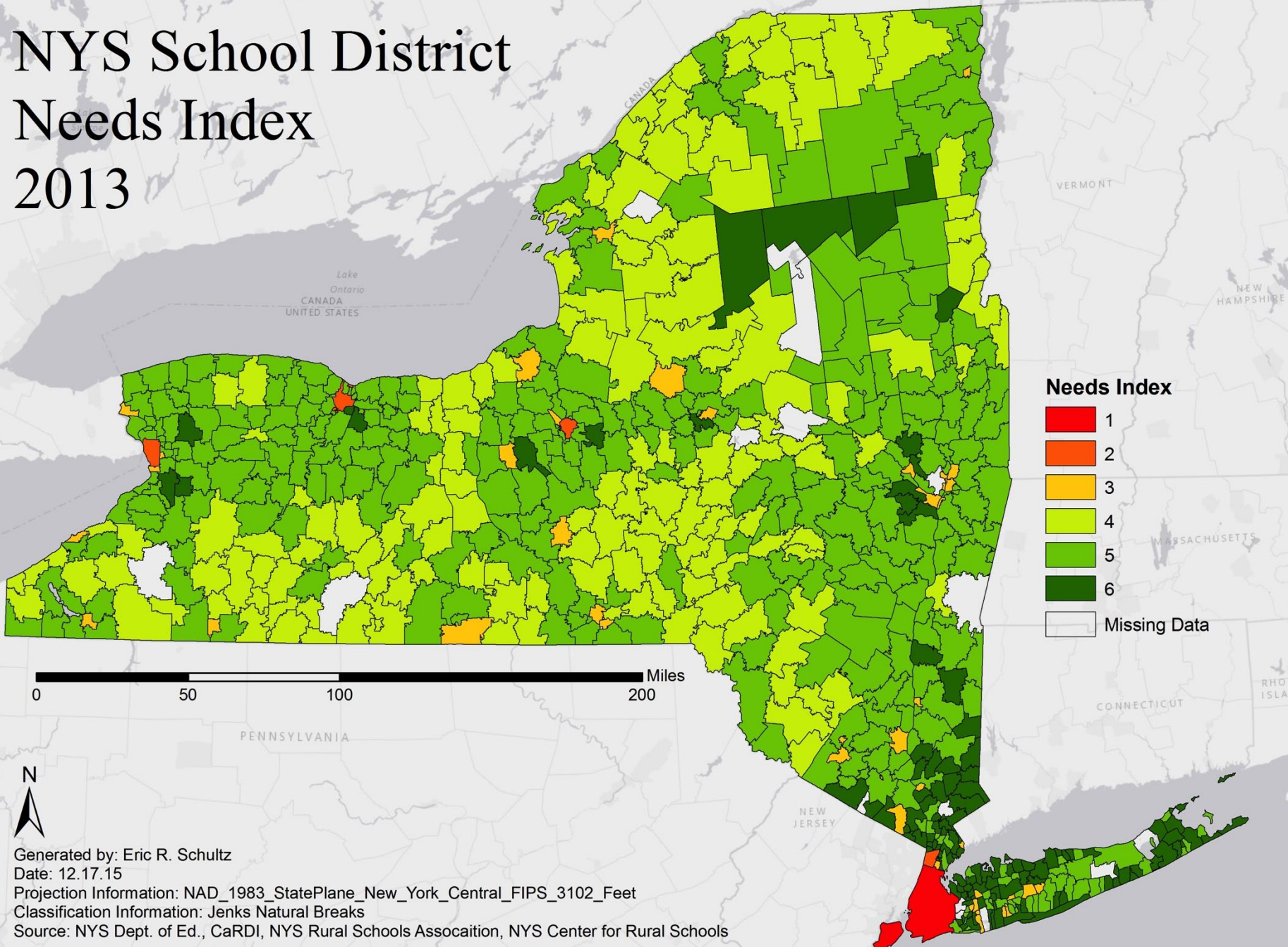


NEW YORK STATE CENTER *for*
RURAL SCHOOLS
building CONNECTIONS, CAPACITY, and KNOWLEDGE

NYS School District Locale Classifications 2013



NYS School District Needs Index 2013



Generated by: Eric R. Schultz
Date: 12.17.15
Projection Information: NAD_1983_StatePlane_New_York_Central_FIPS_3102_Feet
Classification Information: Jenks Natural Breaks
Source: NYS Dept. of Ed., CaRDI, NYS Rural Schools Association, NYS Center for Rural Schools

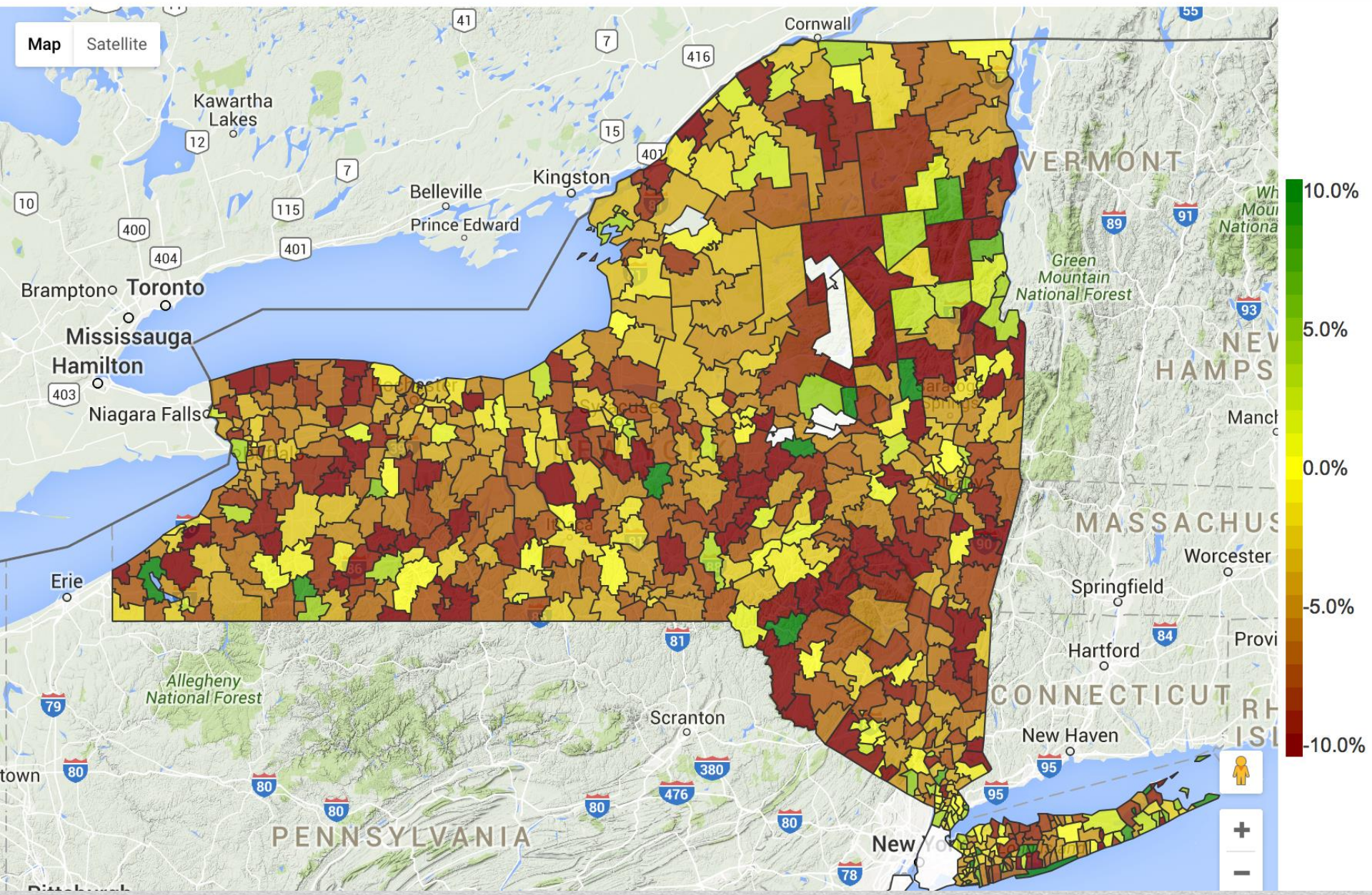
<u>Federal Urban-Centric Locale Code</u>			<u>NYS Needs-Index</u>	
Large City	1		Big 4	4
Medium City	2	22	Small City	44
Small City	19		Poor Rural	152
Suburb Large City	221		Average Need	336
Suburb Medium City	12	243	Low Need	135
Suburb Small City	10			
Town Fringe	52			
Town Remote	40	106		
Town Distant	14			
Rural Fringe	88			
Rural Remote	174	298		
RuralDistant	36			

Districts

Select metric: Total Enrollment (growth last 3 years) ▾

Select year: 14/15 ▾ First Prev Play Stop Next Last

[Link](#) to Mapping Tool

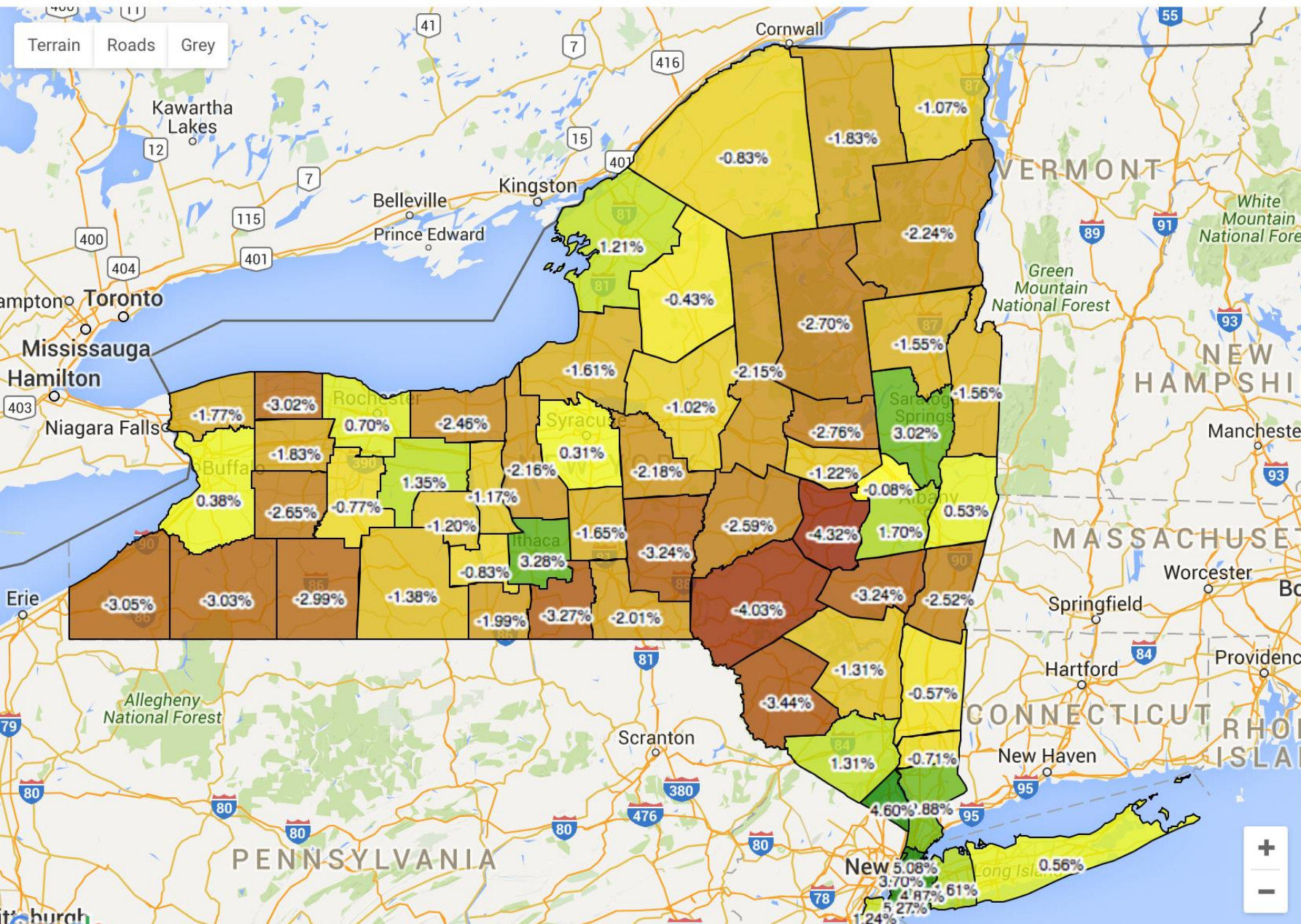


	Public # Change	Public % Change	Private % Change
City 1993-2001	1,047	0%	
City 2001-2013	(40,067)	-19%	-39%
Suburb 1993-2004	124,325	12%	
Suburb 2004-2013	(92,149)	-9%	-13%
Town 1993-2000	(879)	0%	
Town 2000-2013	(42,971)	-19%	-15%
Rural 1993-2000	12,506	3%	
Rural 2000-2013	(76,650)	-21%	-20%

Enrollment Change before and after peak



Terrain Roads Grey

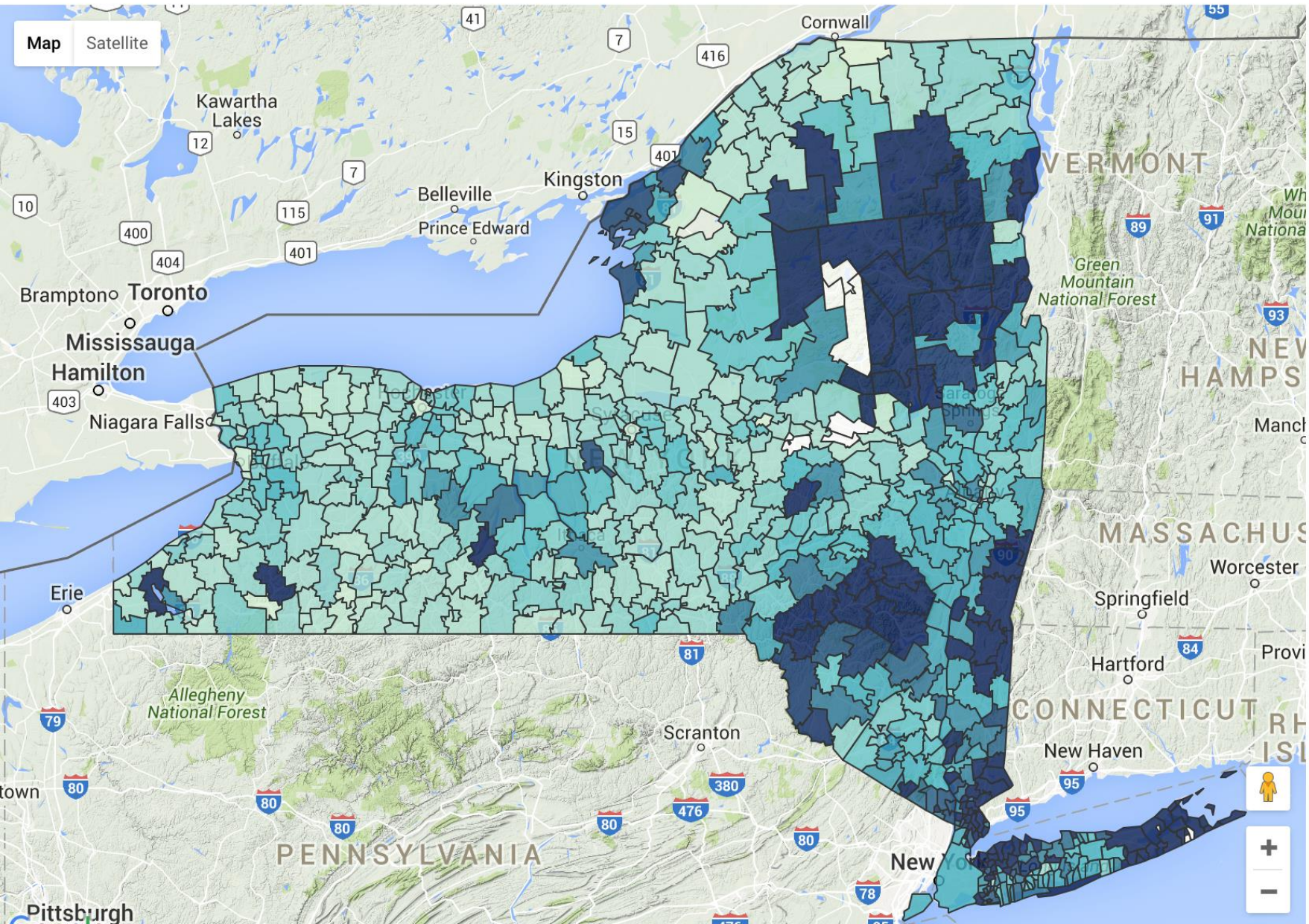


Select metric: Property Wealth per Pupil

Select year: 13/14

First Prev Play Stop Next Last

[Link to Mapping Tool](#)



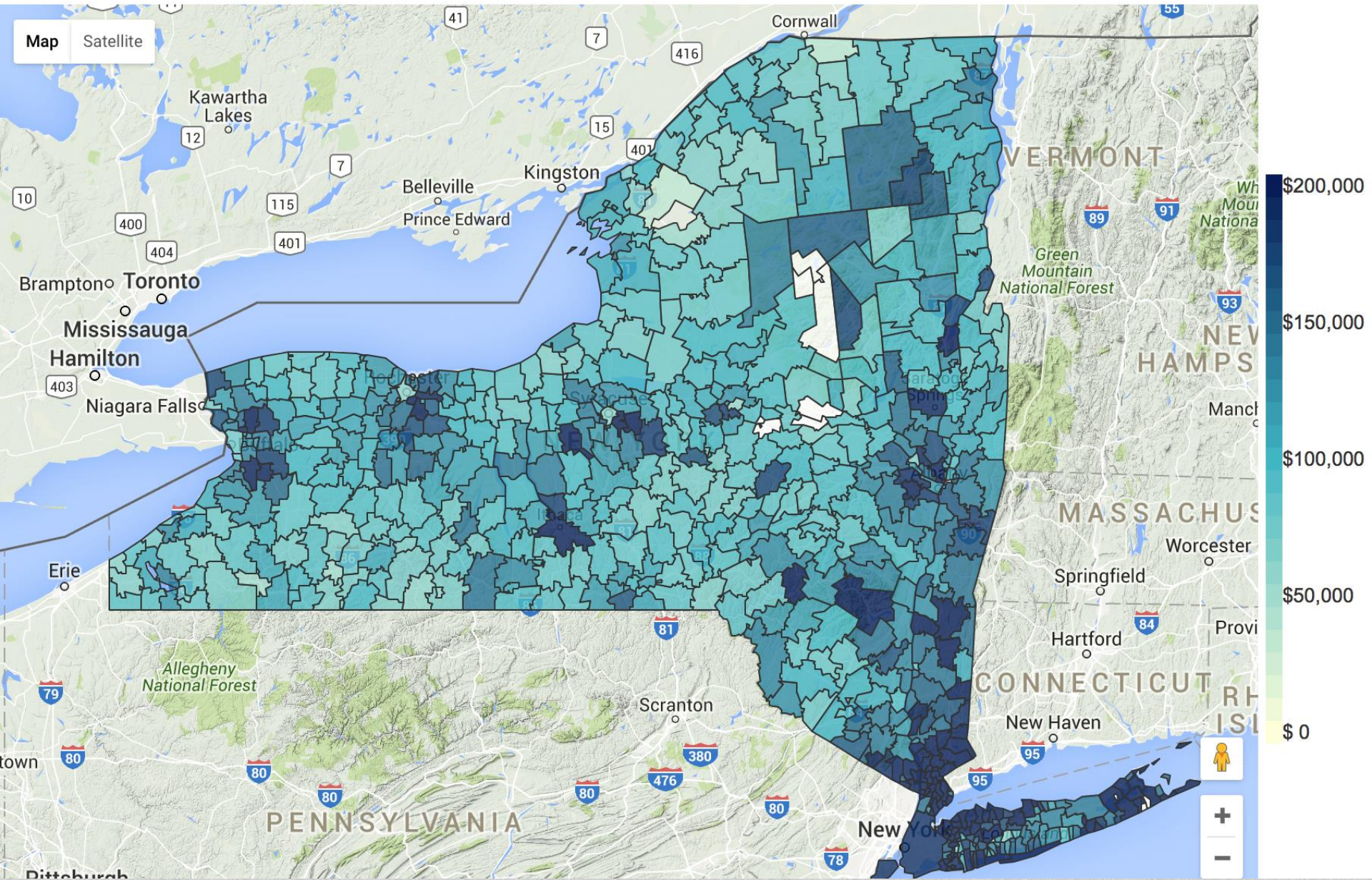
Map navigation controls:

- Person icon (Home)
- Plus sign (+) (Zoom In)
- Minus sign (-) (Zoom Out)

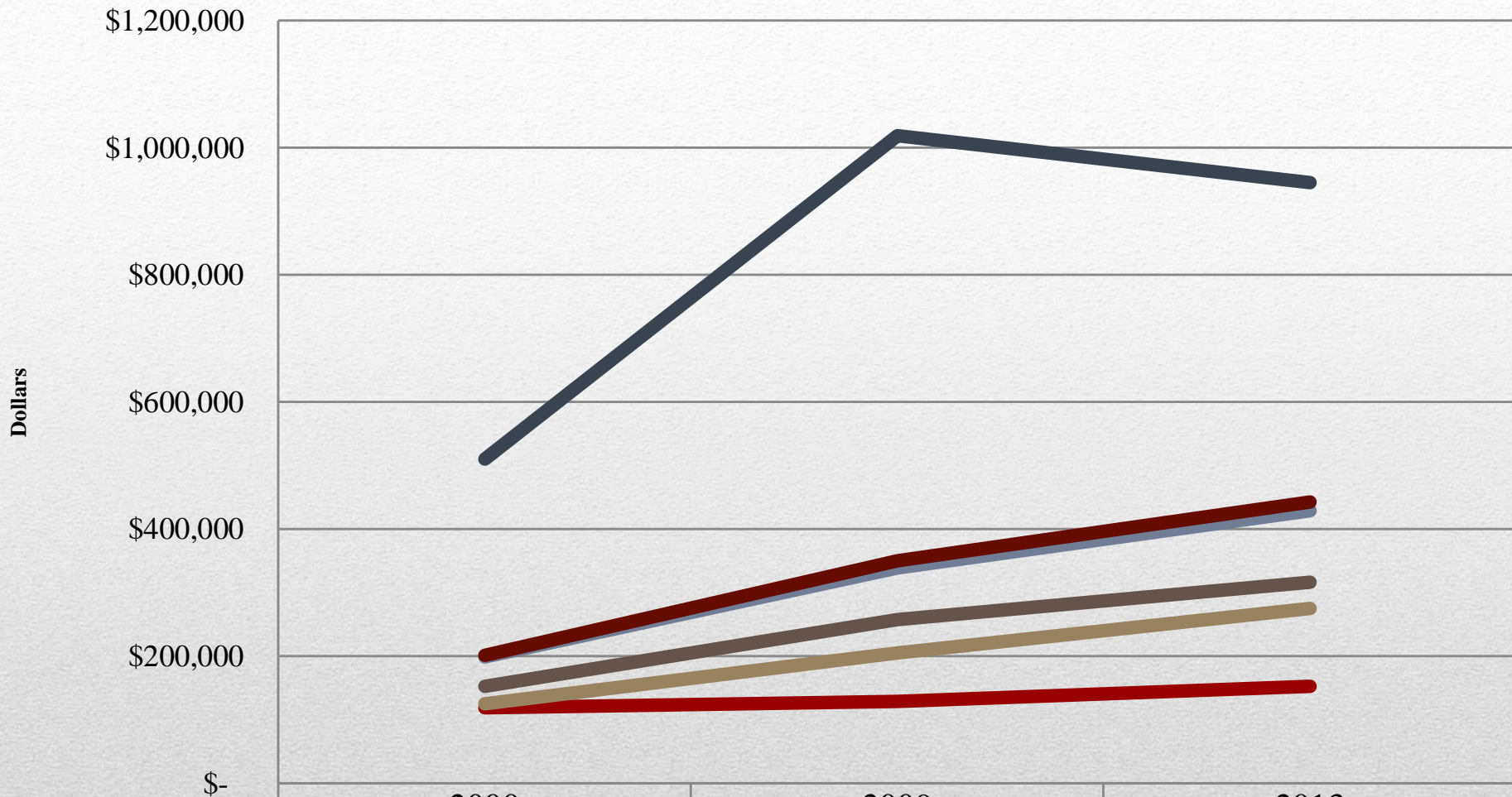
Select metric: ▾


Select year: ▾

[Link to Mapping Tool](#)

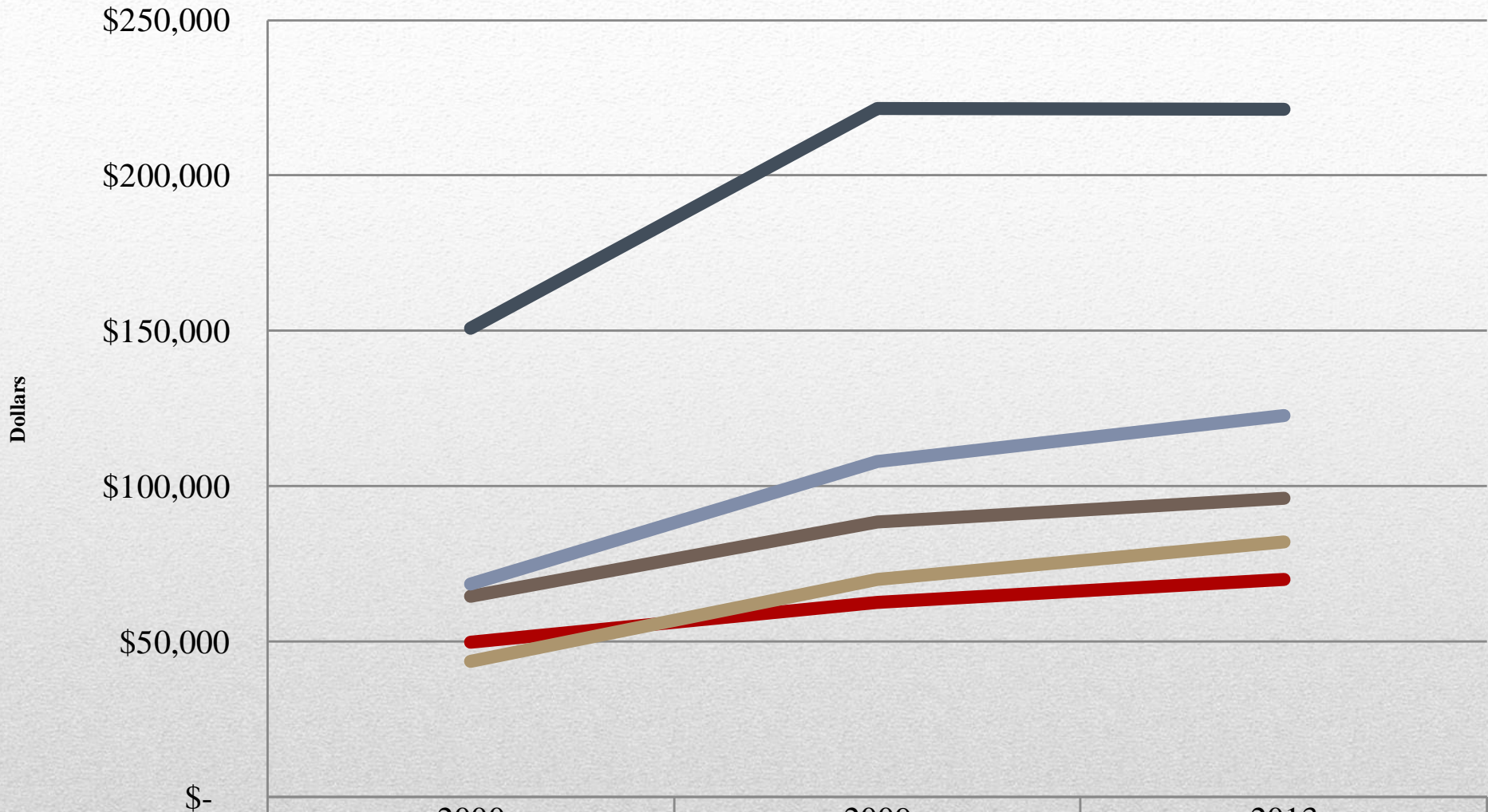


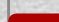

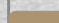


Mean Assessed Value per Pupil



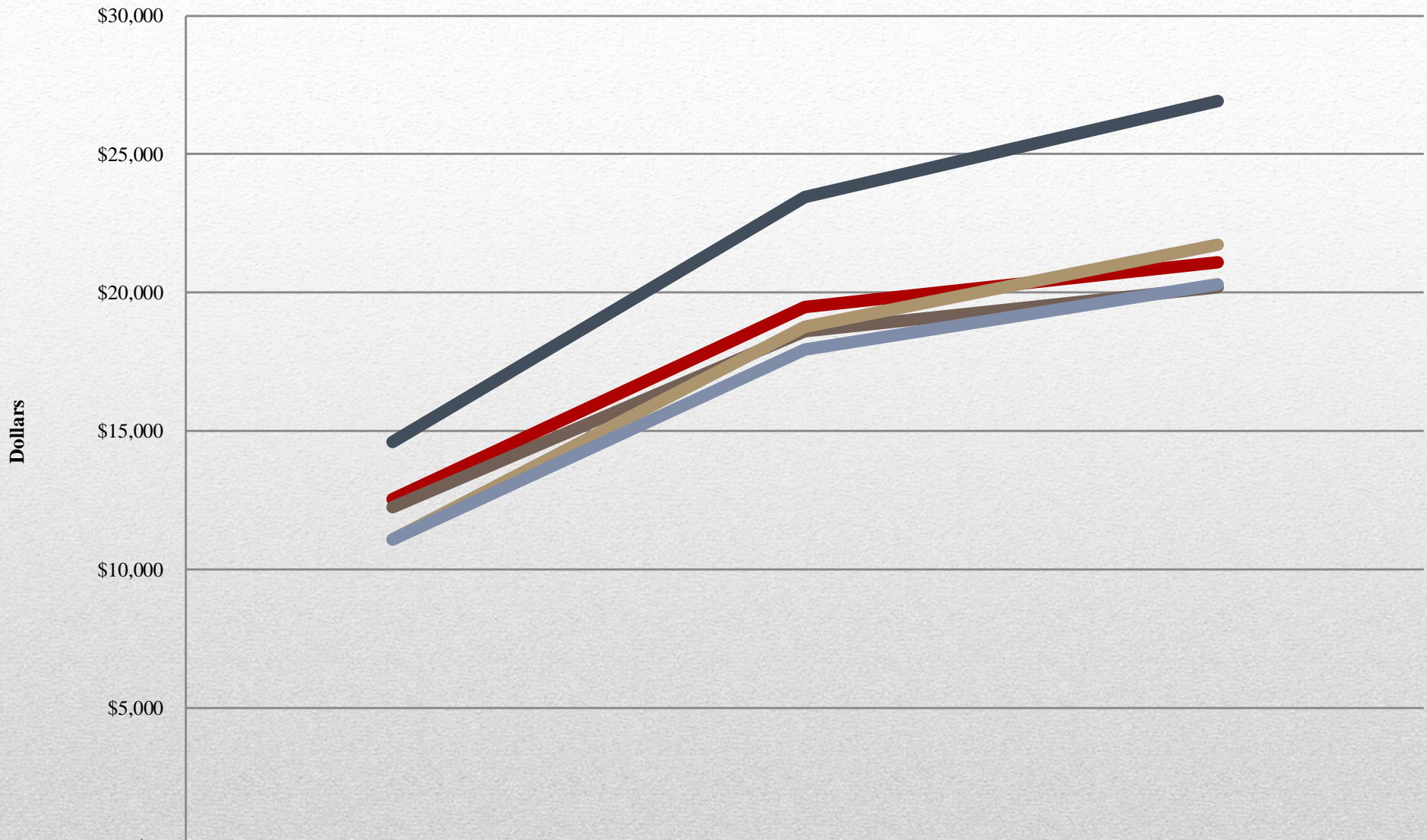
	2000	2009	2013
 Big 4	\$118,415	\$128,548	\$151,946
 Small City	\$151,780	\$257,007	\$315,606
 Poor Rural	\$124,893	\$204,020	\$274,467
 Average Need	\$198,110	\$339,024	\$429,141
 Low Need	\$509,482	\$1,019,329	\$945,711
 Total	\$200,606	\$349,390	\$442,031

Mean District Income per Pupil



	2000	2009	2013
 Big 4	\$49,805	\$62,664	\$69,998
 Small City	\$64,644	\$88,516	\$96,047
 Poor Rural	\$43,693	\$69,913	\$82,123
 Average Need	\$68,517	\$107,878	\$122,651
 Low Need	\$150,767	\$221,471	\$221,353

Median District Per Pupil Spending



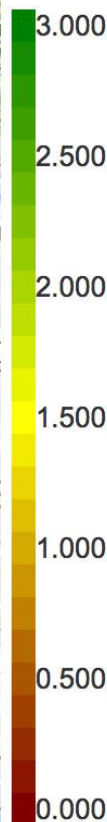
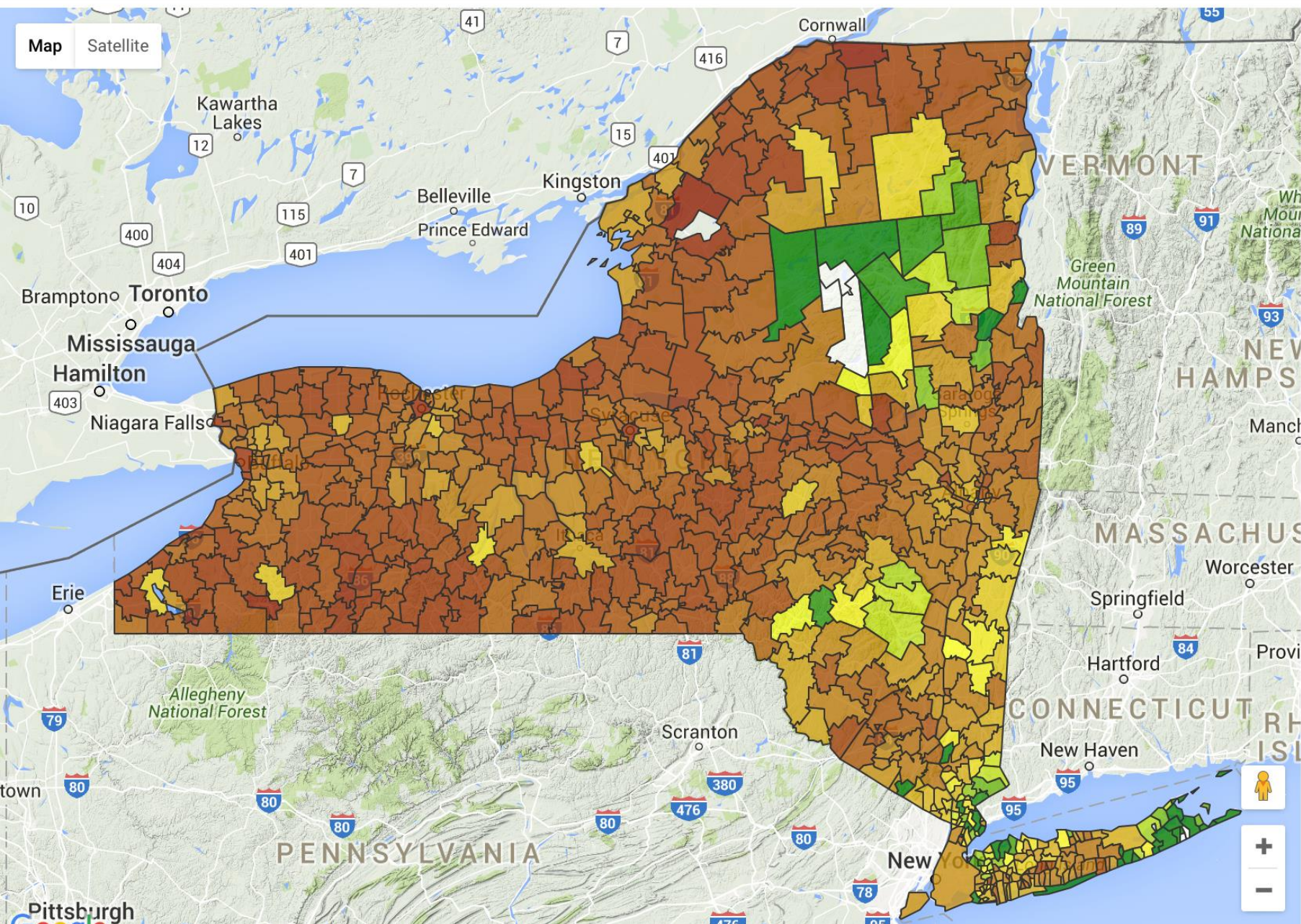
	2000	2009	2013
Big 4	\$12,551	\$19,474	\$21,089
Small City	\$12,256	\$18,616	\$20,200
Poor Rural	\$11,100	\$18,755	\$21,719
Average Need	\$11,080	\$17,956	\$20,308
Low Need	\$14,615	\$23,456	\$26,918

Select metric: Combined Wealth Ratio

Select year: 12/13

First Prev Play Stop Next Last

Map Satellite

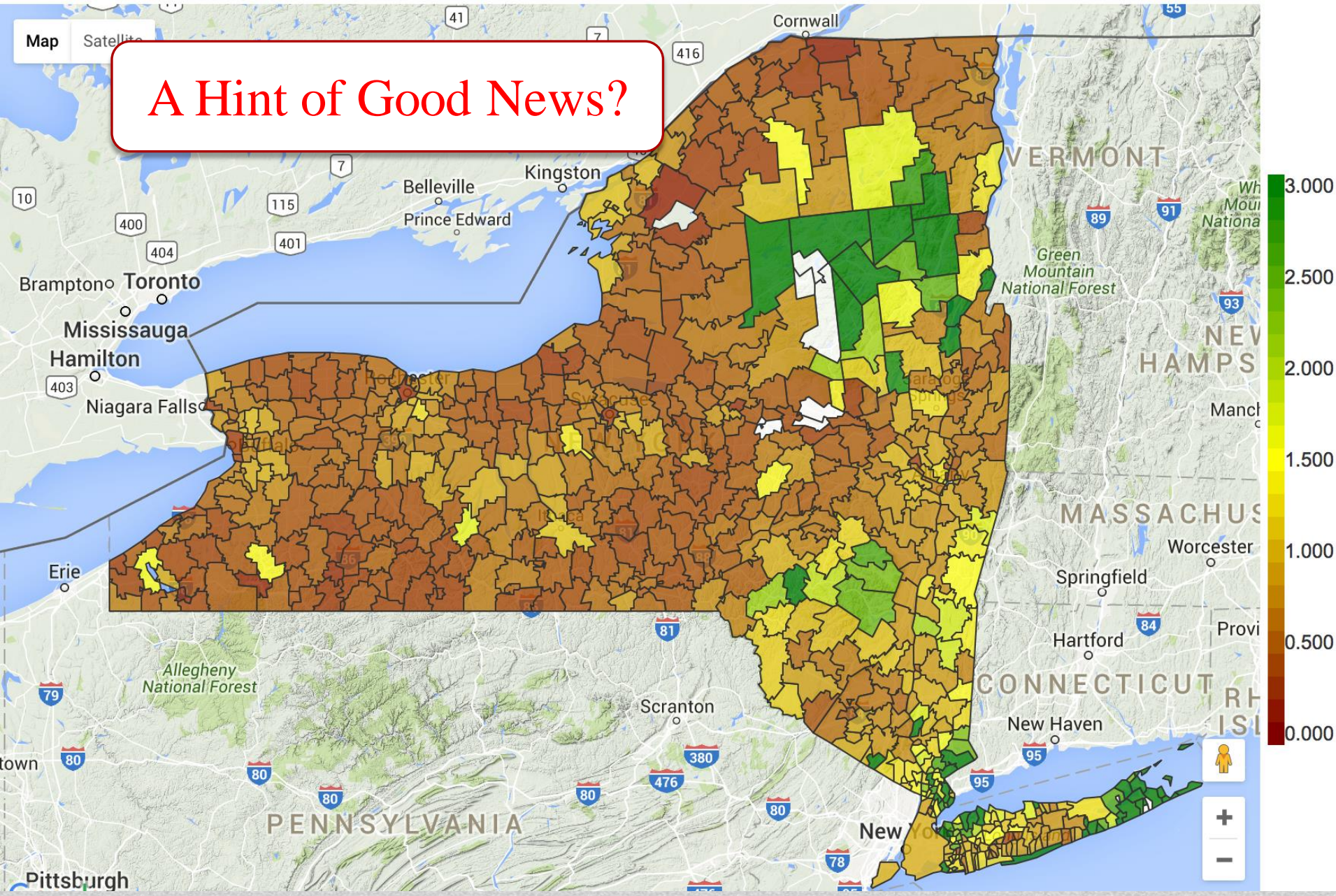


Map navigation controls including a person icon, a plus sign (+), and a minus sign (-).

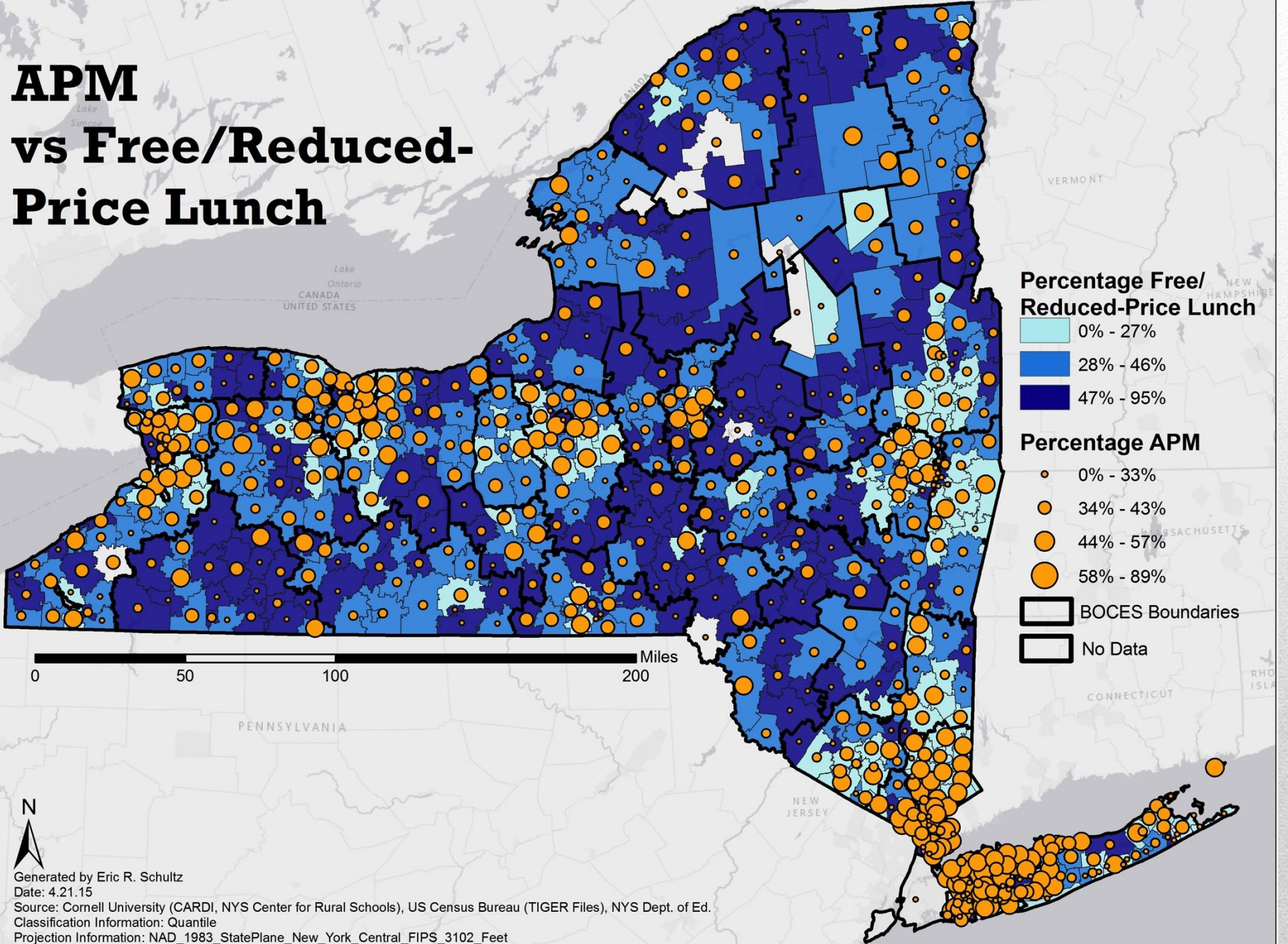
Select metric: Combined Wealth Ratio

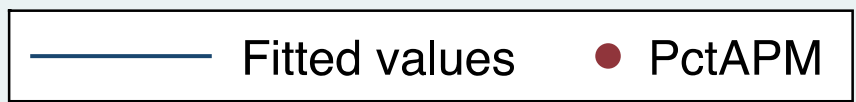
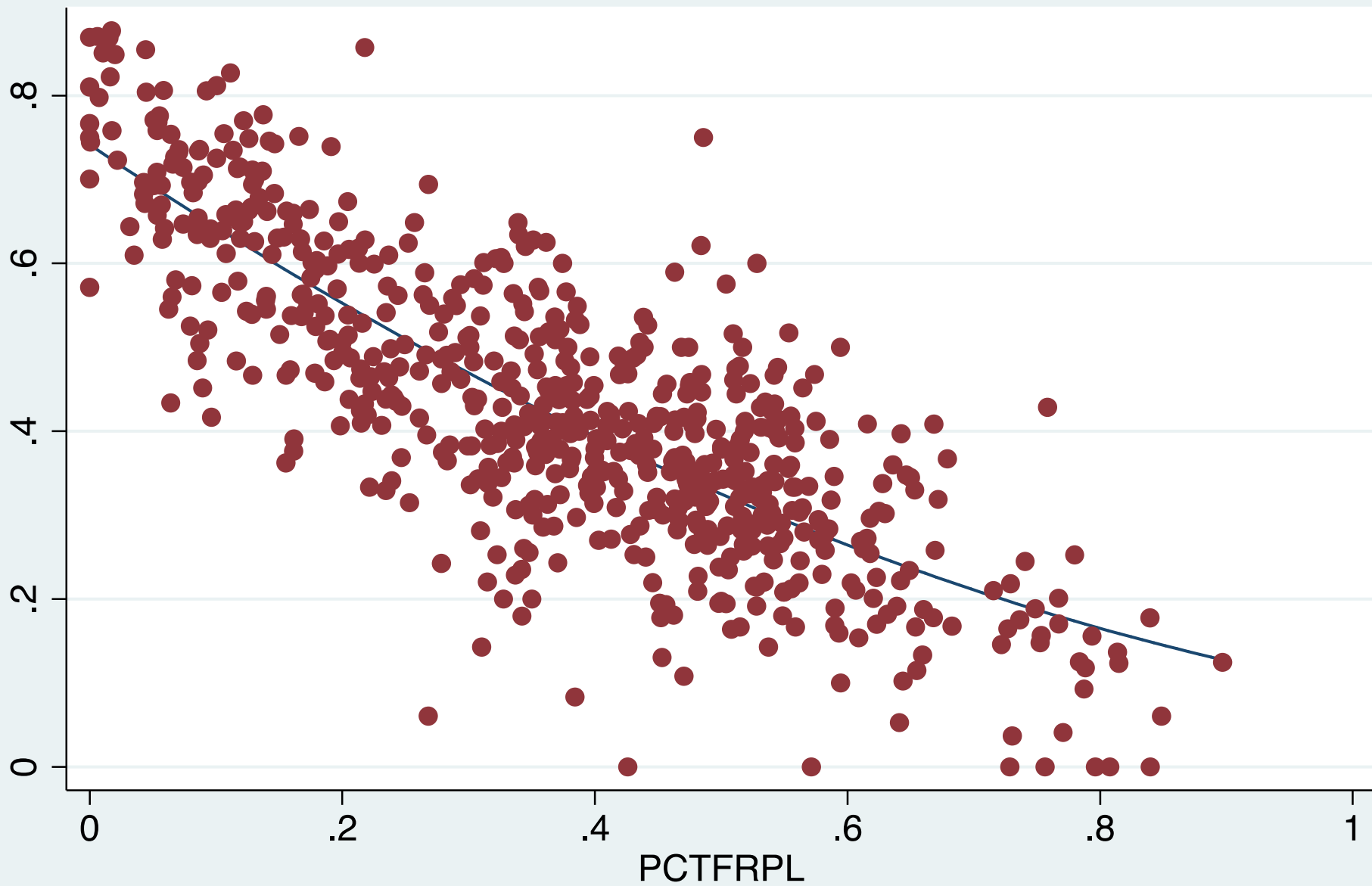
Select year: 13/14 [First] [Prev] [Play] [Stop] [Next] [Last]

A Hint of Good News?

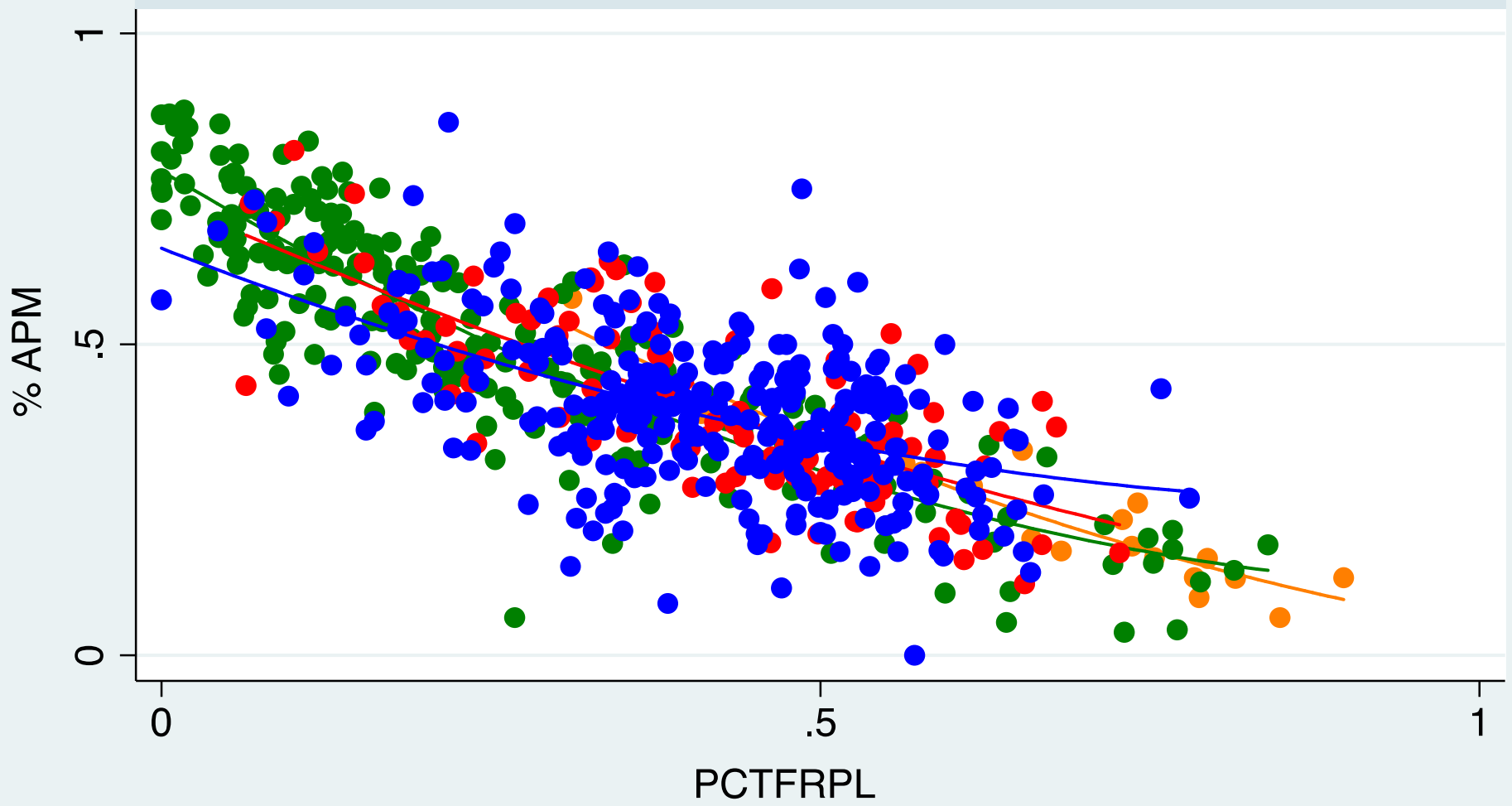


APM vs Free/Reduced-Price Lunch

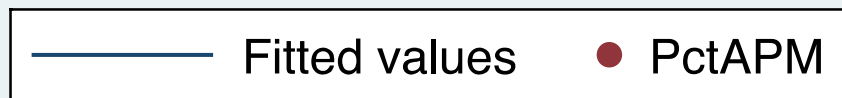
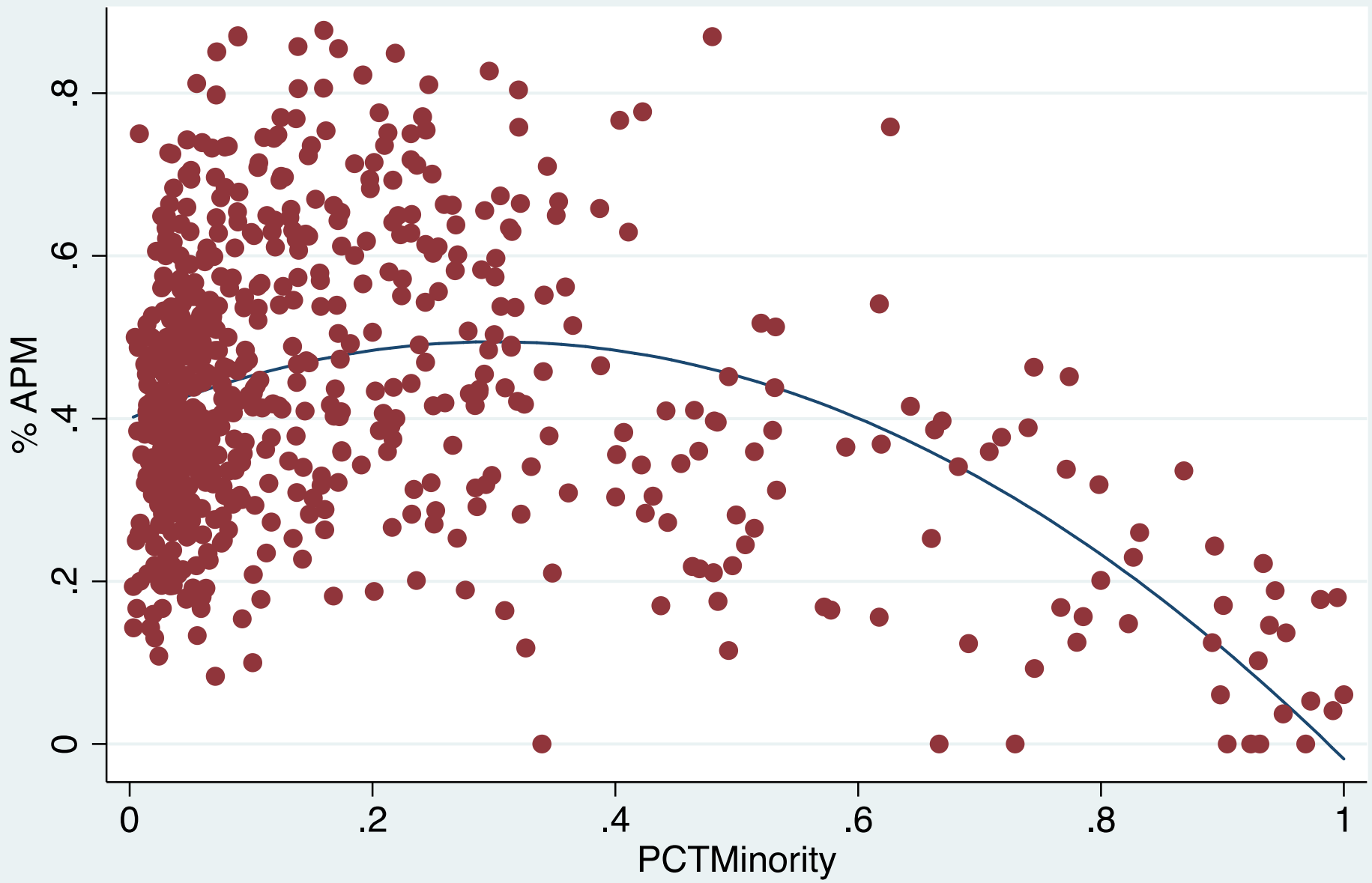


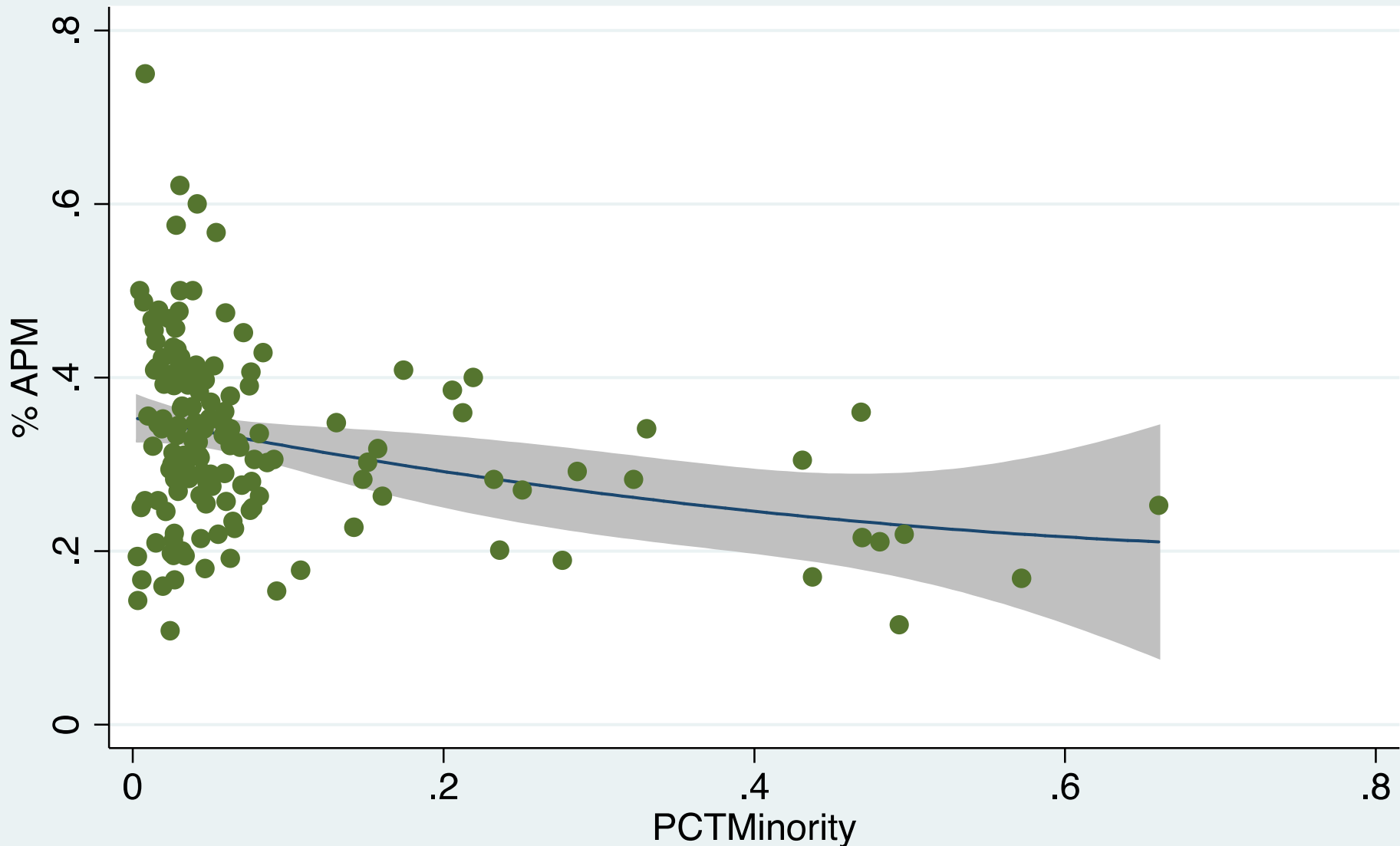


2013

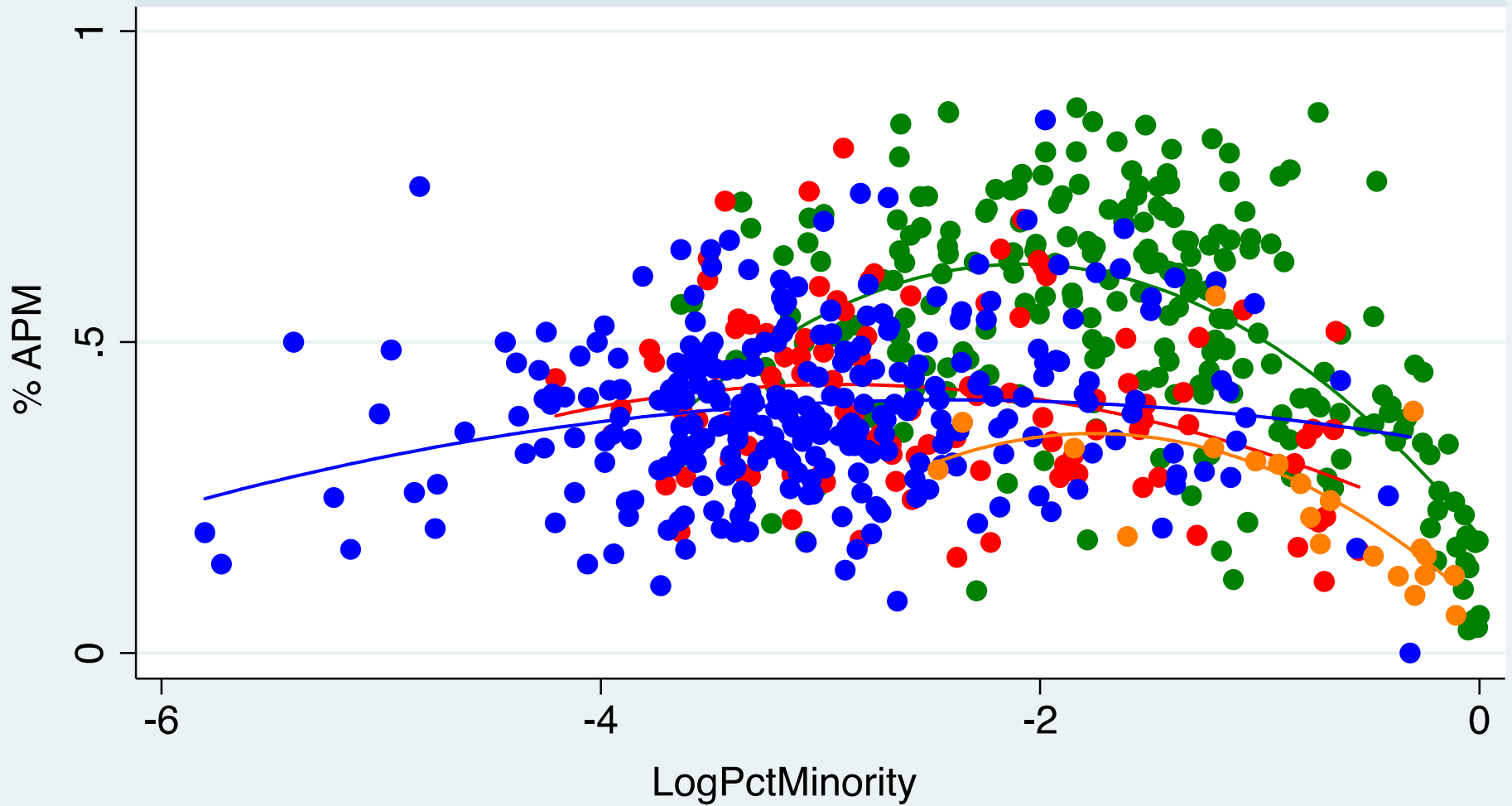


Graphs by YEAR

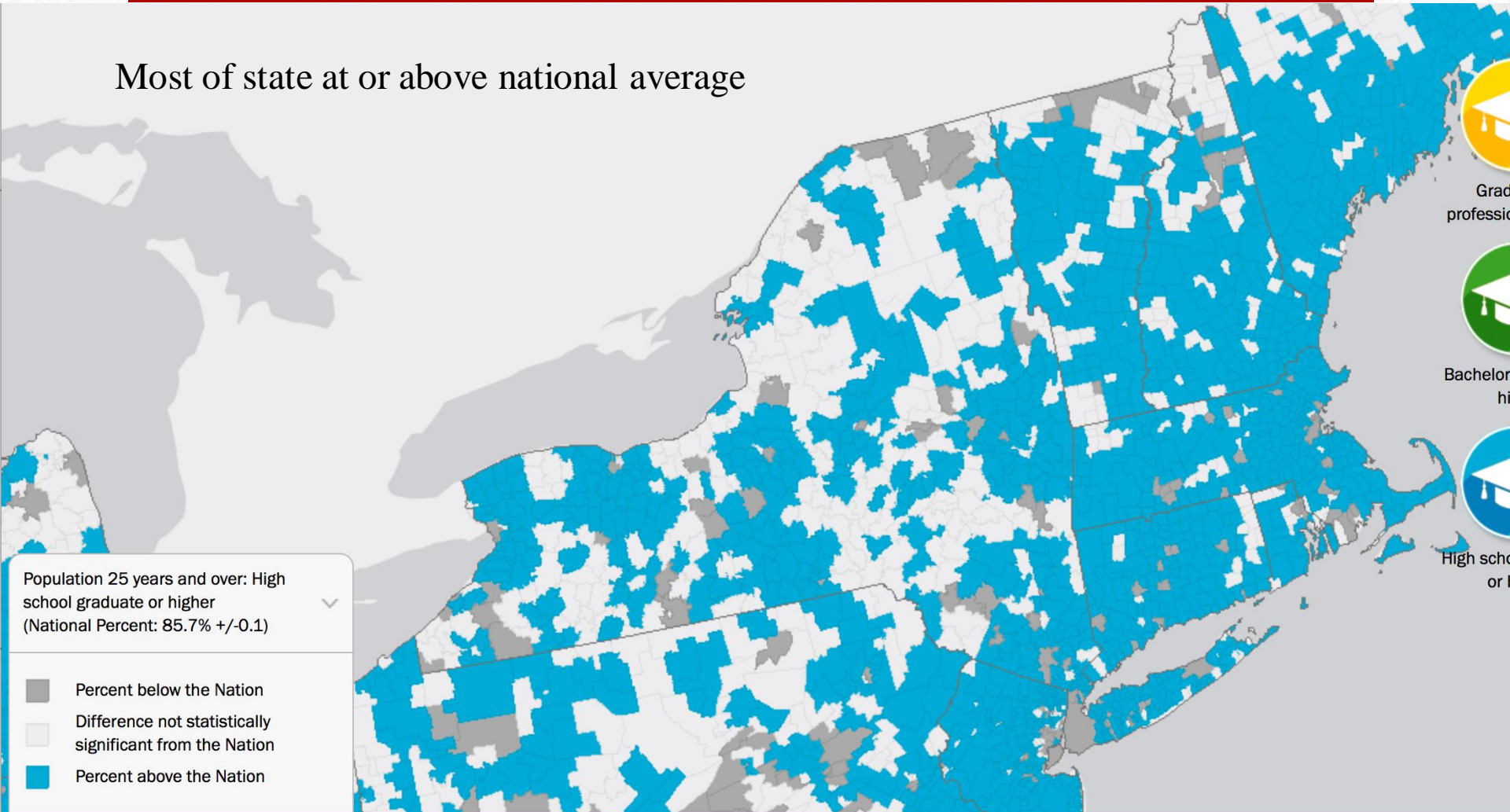




2013



Most of state at or above national average

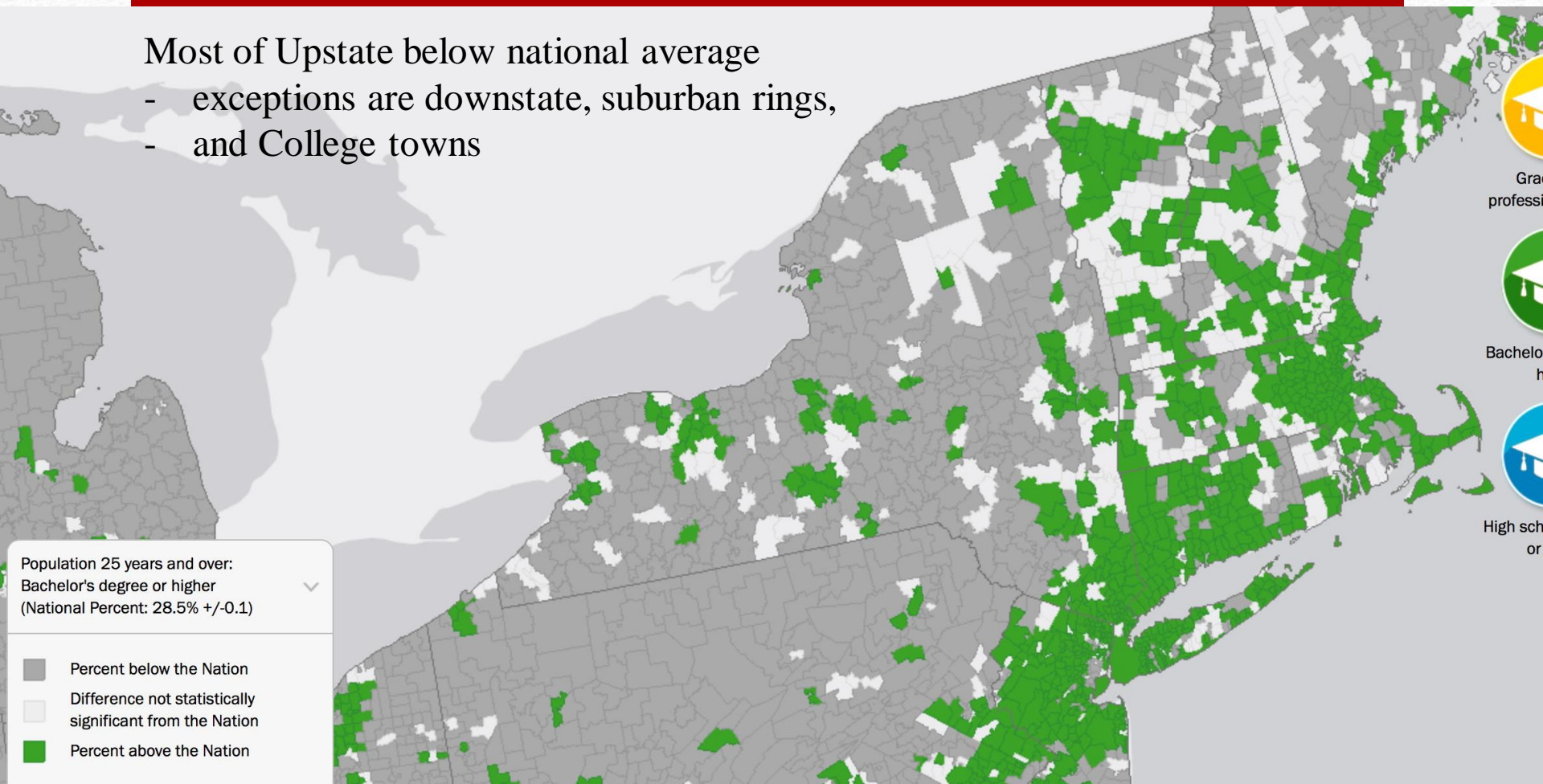


Source: Census Bureau, American Community Survey 2008-2012 Profile Table DP02

High School Degree

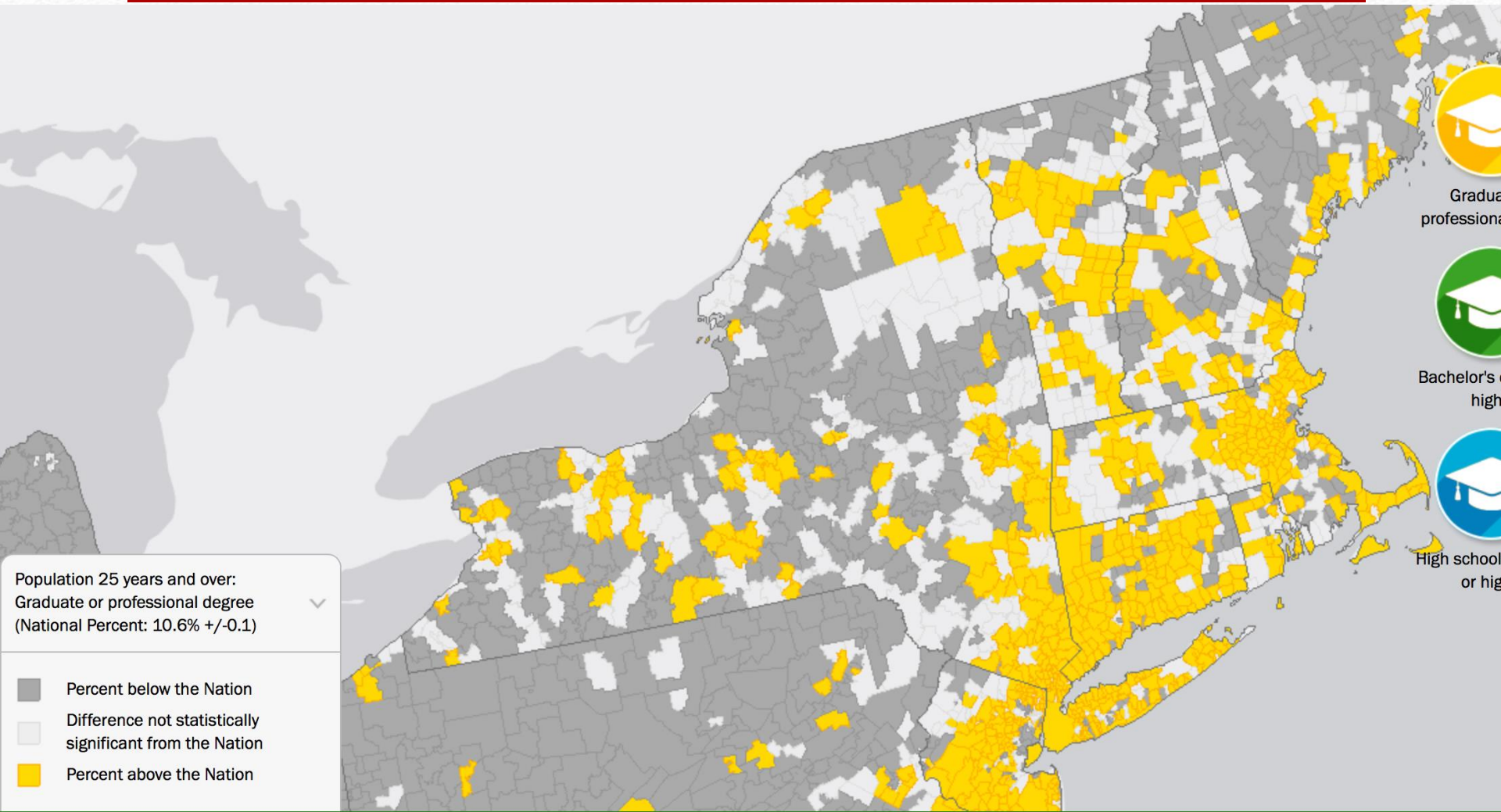
Most of Upstate below national average

- exceptions are downstate, suburban rings,
- and College towns



Source: Census Bureau, American Community Survey 2008-2012 Profile Table DP02

Bachelor's Degree



Source: Census Bureau, American Community Survey 2008-2012 Profile Table DP02

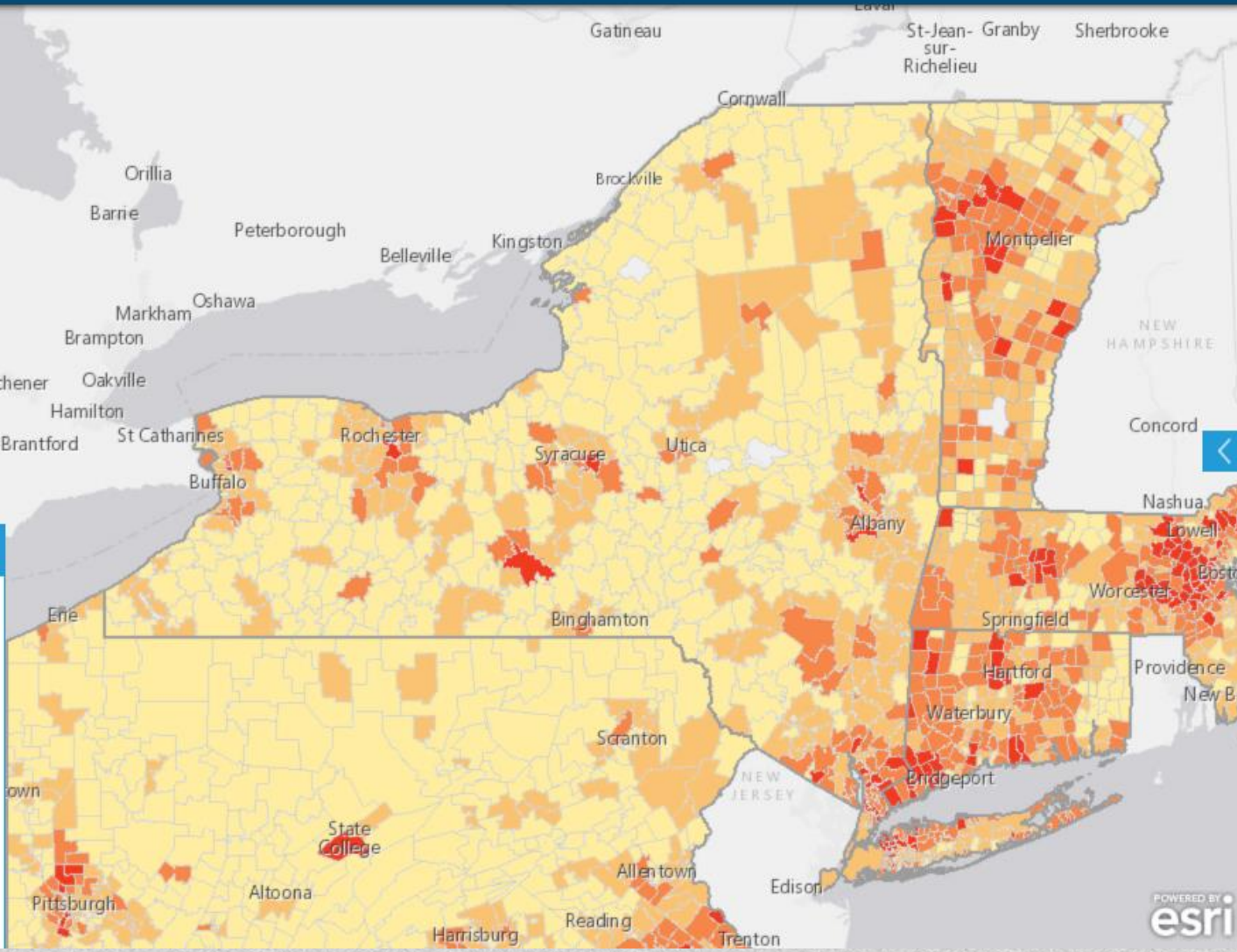
Graduate Degree



Legend

American Community Survey and District Special Tabulations 2009-13 (Total Population)
> SELECTED SOCIAL CHARACTERISTICS IN THE UNITED STATES > EDUCATIONAL ATTAINMENT > Percent bachelor's degree or higher

0% - 23%
23% - 37%
37% - 54.7%
54.7% - 86%

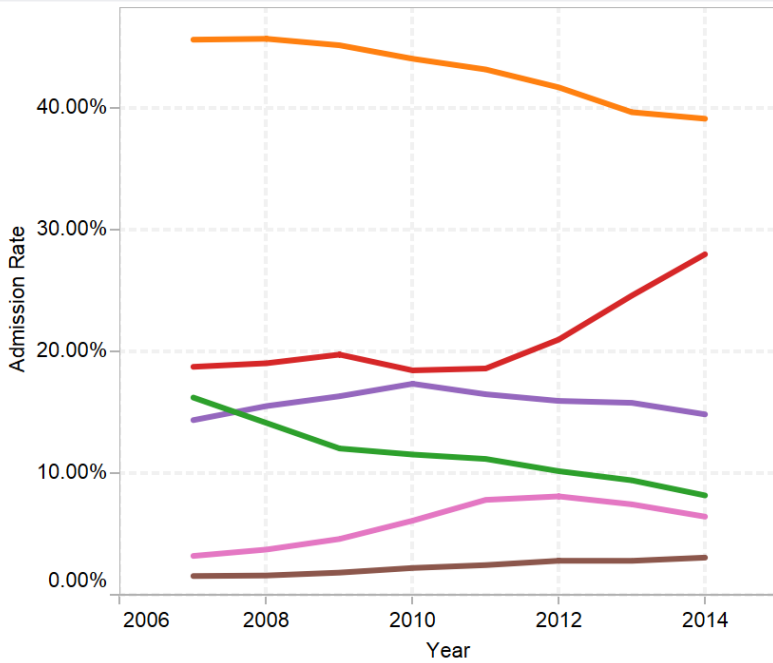


[Link](#) to Mapping Tool

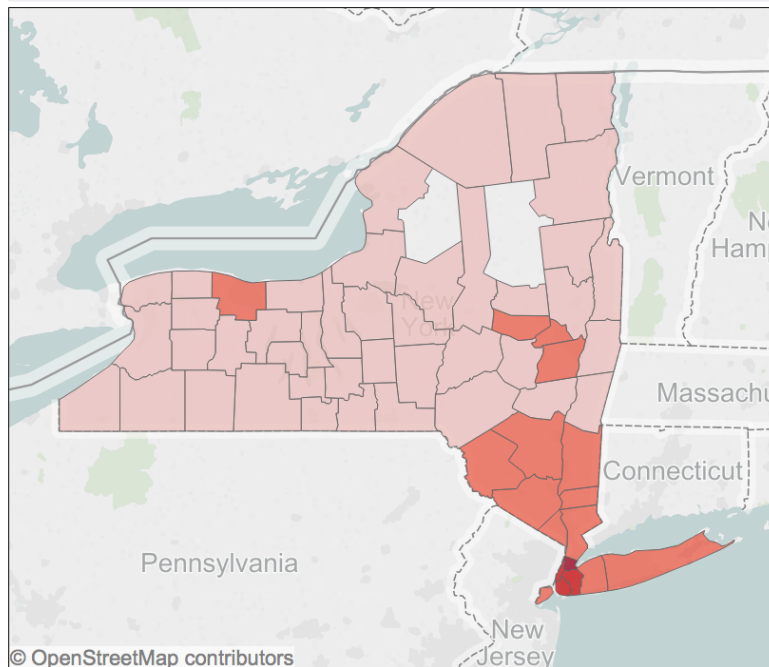


NYS Chemical Dependency Admissions

Total State Admissions By Substance



Heroin Admissions By County - 2007



Year

< 2007 >

Show History

Admission Rate

0.32% 42.35%

Primary Substance Group

- Alcohol
- Cocaine/Crack
- Heroin
- Marijuana/Hashish
- Other or Unknown
- Rx Opioids

Heroin Trends

[Link](#) to tool

		Mean Number				Median Number		
AVERAGE NEEDS		2006	2011	2013		2006	2011	2013
	Number of Providers	14.0	13.4	12.2		10.0	9.5	8.0
	Infant Slots	17.1	20.9	21.6		8.0	8.0	8.0
	Toddler Slots	33.2	39.3	40.3		10.0	12.0	12.0
	Preschool Slots	101.3	119.8	126.5		39.0	54.5	57.0
LARGE CITY								
	Number of Providers	300.0	302.0	294.5		264.5	238.5	234.0
	Infant Slots	304.8	331.2	320.5		333.0	373.0	374.5
	Toddler Slots	580.2	552.0	544.0		616.0	591.5	596.0
	Preschool Slots	1640.2	1893.8	1905.8		1793.0	1775.5	1830.0
LOW NEEDS								
	Number of Providers	9.5	9.7	9.4		7.0	7.0	7.0
	Infant Slots	24.0	26.5	27.3		15.5	16.0	16.0
	Toddler Slots	52.3	61.1	66.4		29.5	36.5	41.0
	Preschool Slots	166.1	198.1	212.5		105.0	137.0	152.5

		Mean Number			Median Number		
RURAL HIGH NEEDS							
	Number of Providers	8.2	7.2	6.1	5.0	5.0	4.0
	Infant Slots	4.7	5.1	4.9	0.0	0.0	0.0
	Toddler Slots	6.8	7.1	7.1	0.0	0.0	0.0
	Preschool Slots	38.9	41.9	42.5	19.0	18.5	18.0
URBAN/SUBURBAN/HIGH NEEDS							
	Number of Providers	44.6	41.9	39.4	32.0	33.0	33.0
	Infant Slots	43.6	37.2	38.1	29.0	24.0	24.0
	Toddler Slots	77.7	75.3	80.4	53.0	51.0	51.0
	Preschool Slots	317.6	336.1	337.5	256.0	280.0	297.5

Caring for the Young
